

FileCloud Enterprise Edition Value Proposition




FILECLOUD
WWW.GETFILECLOUD.COM

Large enterprises have different needs

- Multiple regulations across countries
- 1000s of users with millions of files and interactions/day
- Many branch offices

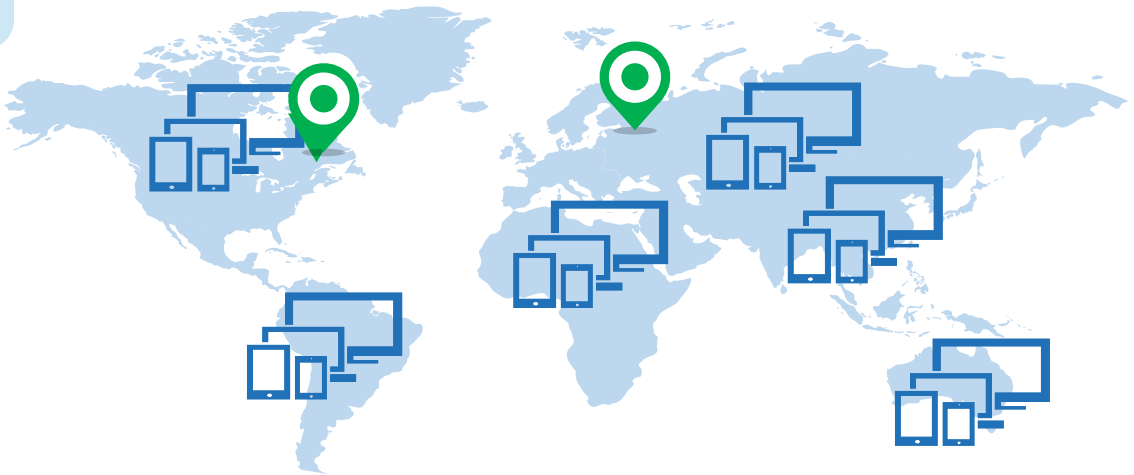


FileCloud Enterprise Edition - designed for large enterprises

- 
- Mass deployment and remote monitoring
 - Policy management
 - High availability, Branch office
 - Data Governance
 - Professional services
 - Secure enterprise and file sharing

Deploy and configure 1000s of devices

- Configure devices and apps
- Troubleshoot remotely
- Deploy on any region/infrastructure
- Make your administrator look like superheroes



Mass Deployment - sample parameters

- Drive Mount Point
- Sync Folder Location
- FileCloud Server URL
- Open File Explorer on Start

Supported Parameters

The following is the list of supported default configuration parameters currently supported.

Parameter	Type	Notes	Syn
url	String	The server URL. example: https://files.xyz.com	YES
profile	String	User name to use to login. example: john or john@company.com You can use the current OS user as the username by specifying \${USER}	YES
checkupdates	String	'0' to disable, '1' to enable	YES
httpproxyenabled	String	'0' to disable, '1' to enable	NO
httpproxyhost	String	Proxy Hostname to use for connection	YES
httpproxyport	String	Proxy Port to use for connection	YES
httpproxyuser	String	Proxy User Authentication name to use	YES
httpproxypassword	String	Proxy User Authentication password to use	YES
ssllevel	String	Special directive to allow apps to connect to TLS 1.2 only servers. Use 'TLSV1_2_CLIENT_USE'	YES
syncfolderlocation	String	Path to use for the sync folder location. DEFAULT - use the default location Absolute Full Paths - e.g. c:\filecloudsync Expanded Paths - e.g. %APPDATA%\FileCloudSync (Windows Only) or \${HOME}\FileCloudSync (Windows and Mac OSX)	YES

FileCloud – Smart Content Classification Engine

Definition Attributes

- **Classifier:** Index Service ex: SOLR
- **Pre Condition:** What triggers the CCE rule?
- **Condition:** What results trigger the action?
- **Parameters:** Search Patterns
- **Action:** Set Metadata
- Runs daily in the background automatically or manually as needed.

Add Rule

Name ⓘ

Event triggers ⓘ

FILEINDEXED

Rule enabled ⓘ

☐

Definition ⓘ

```
{
  "classifier": "Default",
  "precondition": "true",
  "condition": "count(result) > 0",
  "matchaction": {
    "PII": {
      "Classifications": "{{ join(',', result) }}"
    }
  }
}
```

Classifiers: Default

Sample rule

```
{
  "classifier": "ClassifierName",
  "precondition": "file.size < 1000",
  "condition": "count(result) > 0",
  /* available functions are join() & count() */
  "matchaction": {
    "Metadata Name": {
      "Attribute Name": "Value"
      // Value: 'result1', 'result2'
    }
  },
  "defaultaction": {
    "Metadata Name": {
      "Attribute Name": "Value"
    }
  },
  "parameters": {
    "SOME_PARAM": "Value"
  }
}
```

Save

Cancel

FileCloud – Smart Data Leak Prevention

- Control user action
- Enforce action
- Set Rule Expression:
- Driven by Metadata
- Geo IP Range
- User Type
- User Group
- Email Domain
- Folder Path
- Access Agents

Create DLP Rule

Rule Name ⓘ

Affected User Actions ⓘ

✓ DOWNLOAD

SHARE

LOGIN

Rule Expression ⓘ

DLP Action ⓘ

DENY

Rule Creation Help

CreateCancel

Create DLP Rule

Rule Name ⓘ

Affected User Actions ⓘ

DOWNLOAD

Rule Expression ⓘ

DLP Action ⓘ

✓ DENY

ALLOW

Rule Creation Help

CreateCancel

Criteria	Description	Usage Sample
<code>_request.remoteIp</code>	Returns the IP address been used to execute the action.	<code>_request.remoteIp == '43.12.45.78'</code>
<code>_request.agent</code>	Returns the user agent been used to execute the action. The possible values are: 'Unknown', 'Web Browser', 'Android', 'iOS', 'MS Outlook' and 'MS Office'.	<code>_request.agent == 'Unknown'</code>
<code>_request.inIpv4Range(lowIp, highIp)</code>	Function that checks if the IP address been used to execute the action is part of a given IP range, represented limits of the range (given on the parameters).	<code>_request.inIpv4('138.204.26.254', '138.204.26.1')</code>
<code>_user.username</code>	Returns the username trying to execute an action	<code>_user.username == personanongrata</code>
<code>_user.email</code>	Returns the email of the user trying to execute an action	<code>_user.username == john.snow@mail.com</code>
<code>_user.userType</code>	Return the type of the user that is trying to execute the action. The available types are: 'Full Access', 'Limited Access', 'Guest Access'	<code>_user.userType == 'Guest Access'</code>
<code>_user.inGroup(groupName)</code>	Check if a user is part of a given group	<code>!_user.inGroup('managers')</code>
<code>_file.path</code>	Returns the path been accessed.	<code>_file.path == '/myuser/mydir/myfile.pdf'</code>
<code>_metadata.exists(metadataValue)</code>	Function that checks if the path, or one of their children, have the given metadata attribute set. The metadata attribute must be provided using the <code>`metadataSet.attribute`</code> notation.	<code>_metadata.exists('cce.pii')</code>
<code>_metadata.existsWithValue(metadataValue, value)</code>	This function is similar to the <code>`exists`</code> function, but it checks if the metadata attribute (first parameter) exists, and if it's value is equal to a given value (second parameter)	<code>_metadata.existsWithValue('content.category', 'confidential')</code>

FileCloud Retention Policies -Types

- **Legal Hold** Freezes digital content to aid discovery or legal challenges
- **Archival** Moves and stores old organizational content, for example, to a more cost effective systems for long term
- No deletion is allowed until a specific time period is reached
- After the specified time period is reached, content gets moved to a specific folder or location
- **Retention with x days retention** Identifies digital content to be kept around for a specified amount of time before being deleted or archived (mainly for FINRA)
- **Retention with no deletion** Identifies digital content to be kept around for an unlimited amount of time before being deleted or archived
- **Recycle Bin Retention** Controls who can permanently delete files off the FileCloud Server system
- Can be configured for minimum Recycle Bin retention with automatic deletion
- **Admin Hold** Prevents any update or delete of digital content for an indefinite period of time

Edit Retention Policy

Policy Attributes

Policy Name

Partnership - Close - Admin Hold

Policy Type

Admin Hold

Suspend any action to files due to other retention policies that might affect them.

Description

Manoj's Partnership - Close - Admin Hold

Hide Policy From Users

☐

Enabled

☒

Alert On Violation

☒

Send email alert

☒

Alerts

manoj@codeatthe.com

Type in a comma-separated list of email addresses of users who need to know that a policy expires.

Remote health monitoring

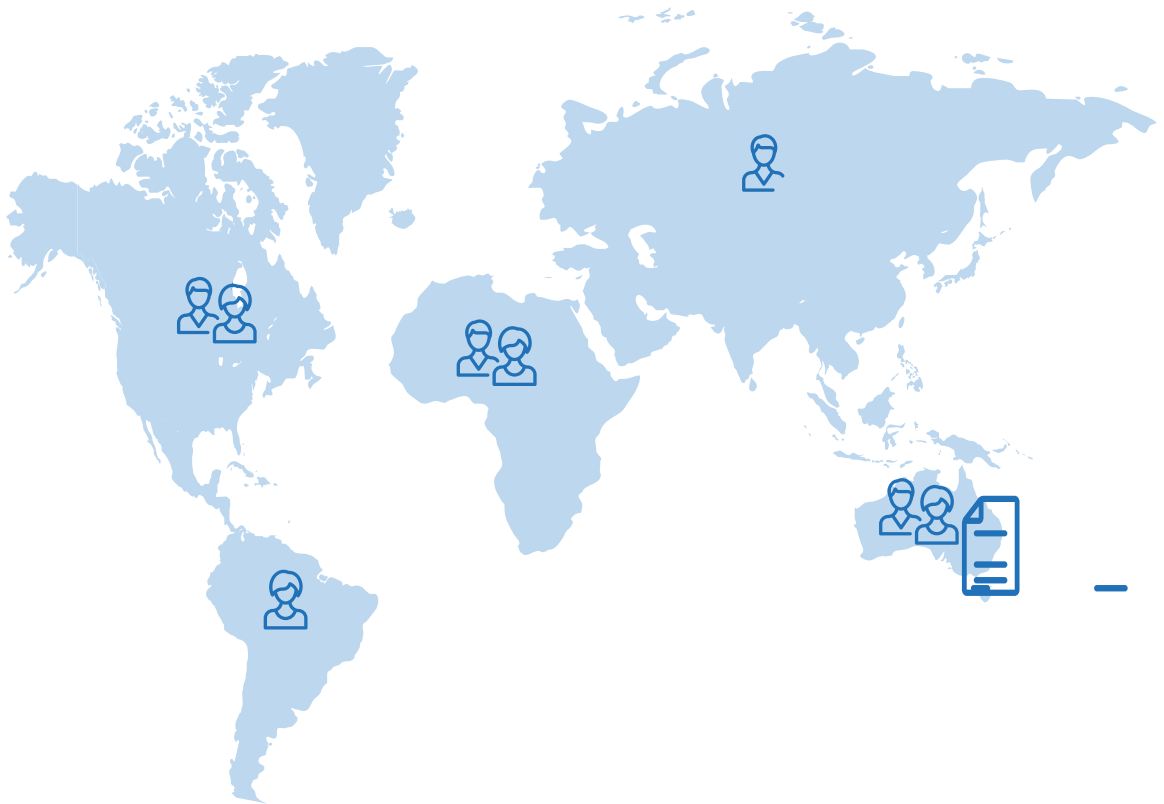
- Health of the app/desktop client
- Block apps
- Remote troubleshooting

☐ Manage Devices

Filter												Username, Device name/details		Permissions Filter : All		Message		Get Logs		Command		Delete	
		Health	TYPE	User name	Device Name	Device Details	Last Access	Status	Access	Action	Logs												
				jio	Attila's iPad	App version: 1.0 OS: iOS - 9.1	Not Available	Approved	Allowed ▾	0													
				andrei	Android-generic_x86-Android SDK built for x86	App version: 1.0 OS: Android - 6.0	Not Available	Approved	Allowed ▾	0													
				jio	Android-chromium-App Runtime for Chrome Dev	App version: 5.2 OS: Android - 5.0	Not Available	Approved	Allowed ▾	0													
				jio	Android-chromium-App Runtime for Chrome Dev	App version: 5.2 OS: Android - 5.0	Not Available	Approved	Allowed ▾	0													
				jio	FileCloudDrive (FILECLOUD-DEMO)	App version: 12.88.0.31259 OS: Windows 8/Server 2012 - 6.2 (Build 9200)	Not Available	Approved	Allowed ▾	1													
				jio	Venkat's iPhone	App version: 1.0 OS: iOS - 9.2.1	Not Available	Approved	Allowed ▾	1													
Device Info												Refresh											
Load complete.																							
No extended information available																							

Manage policies and regulatory requirements

- Supports GDPR, HIPAA and FINRA compliance
- Manage complex user policies
- Federated Search: eDiscovery



Policy management framework

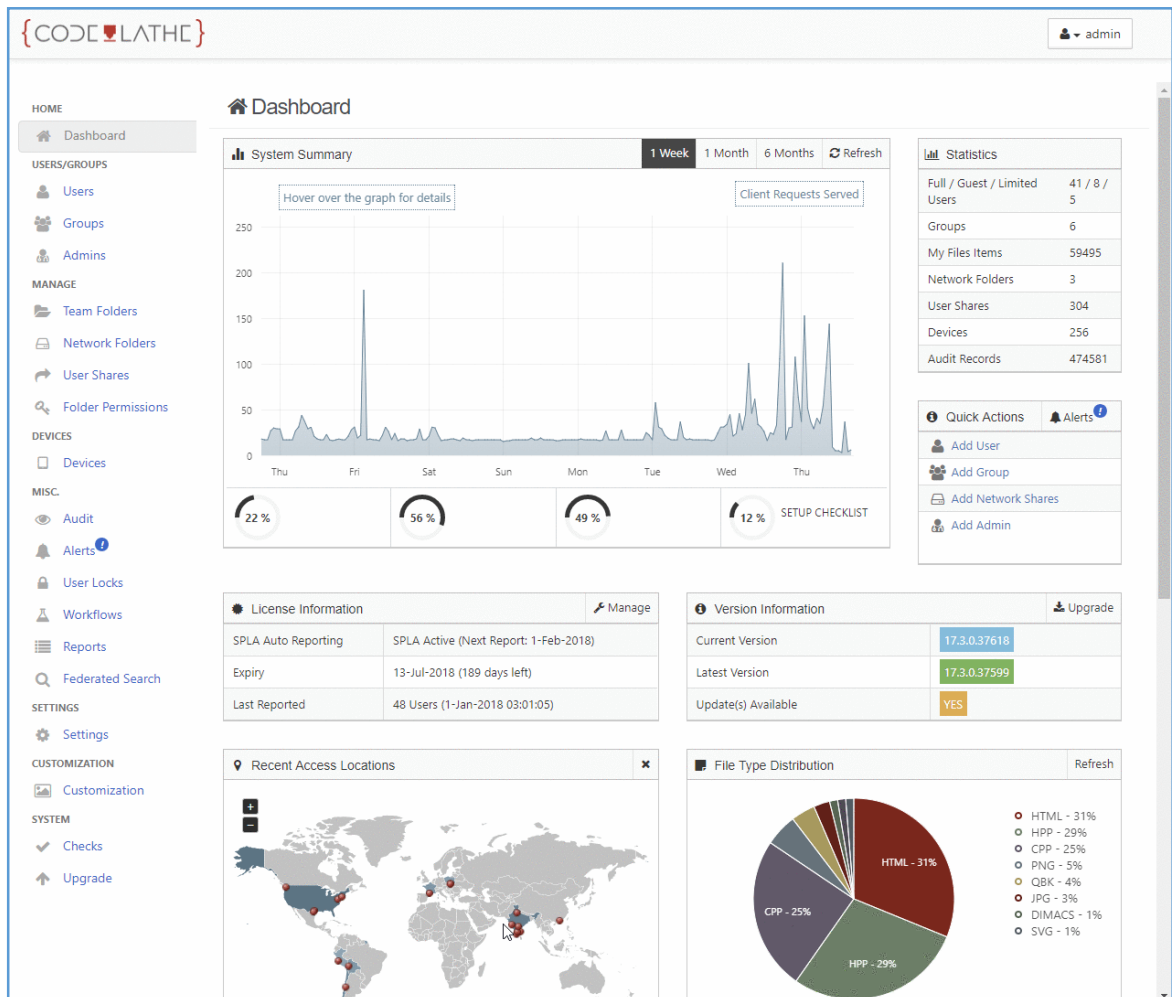
Sample Policies:

Storage Quota

Ask for GDPR consent

Enable 2FA

Require Passcode lock for mobile





About Us

"FileCloud is used by 1000s of customers around the world including Global 2000 enterprises, government organizations, educational institutions, and managed service providers."

"We liked FileCloud's pricing, comprehensive feature set (branding, encryption) and the responsive support"

Stewart

A privately held software company, headquartered in Austin, Texas, USA. Our company offers two products – Tonido for consumers and FileCloud for businesses – used by millions of customers around the world, ranging from individuals to Global 2000 enterprises, educational institutions, and government organizations, and managed service providers.



To read more about how FileCloud can help keep your information secure as it is shared, visit www.getfilecloud.com



WWW.GETFILECLOUD.COM